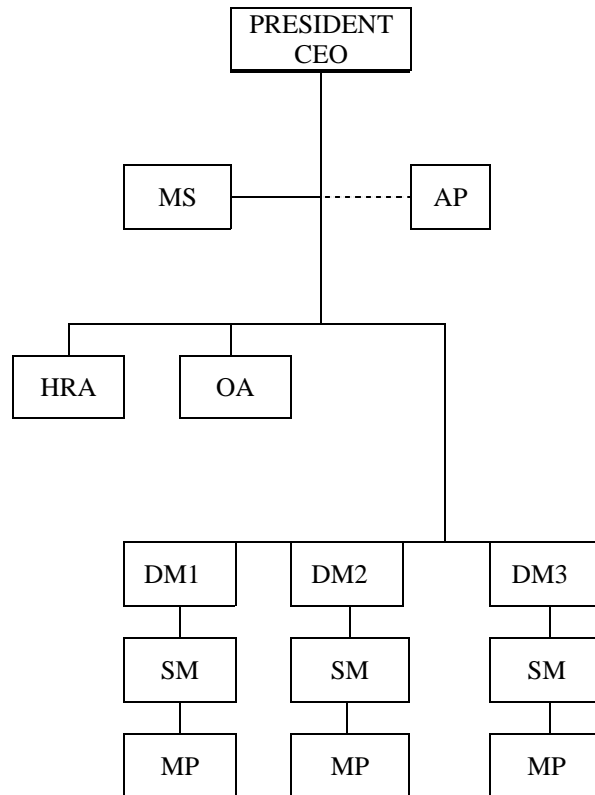


Distribution	SUBJECT	Date
	ORGANIZATIONAL STRUCTURE	01/20/2006

FLYNN MANAGMENT CORPORATION



KEY

- CEO - President
- MS - Management Secretary
- HRA - Human Resources Administrator
- OA - Occupancy Administrator
- DM - District Manager
- SM - Site Manager
- MP - Maintenance Person
- AP - Accounts Payable

EMPLOYEE

- Kevin T. Flynn
- Linda Sadlon
- Elaine Hewitt
- Carol Hildebrandt
- Multiple (3 Districts)
- Multiple
- Multiple
- External Function